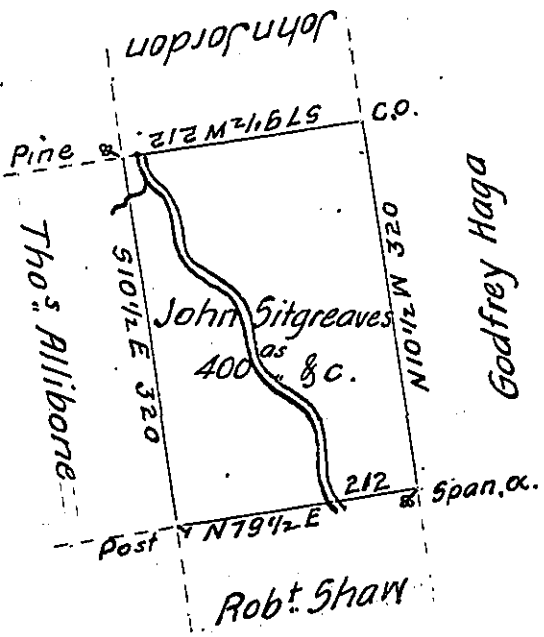


Hazle
Luzerne
(See Page 152)



A Draft of a tract of land Called _____ Situate on the Waters of Black
 Creek in the County of Northum^d or Northampⁿ. Containing four H(obl...)
 Acres & allow^e Surv^d for John Sitgreaves the 20th day of October (obl) by
 Virtue of a Warrant dated the 10th day of July 1793.

To Daniel Brodhead Esq^r. } by W^m Gray
 Surv^r Gen^l. }

IN TESTIMONY that the above is a copy of the original remaining on file in
 the Department of Internal Affairs of Pennsylvania, made
 conformably to an Act of Assembly approved the 16th day of
 February, 1833, I have hereunto set my Hand and caused
 the Seal of said Department to be affixed at Harrisburg,
 this fourth day of December 1906

Isaac R. Brown
 Secretary of Internal Affairs.